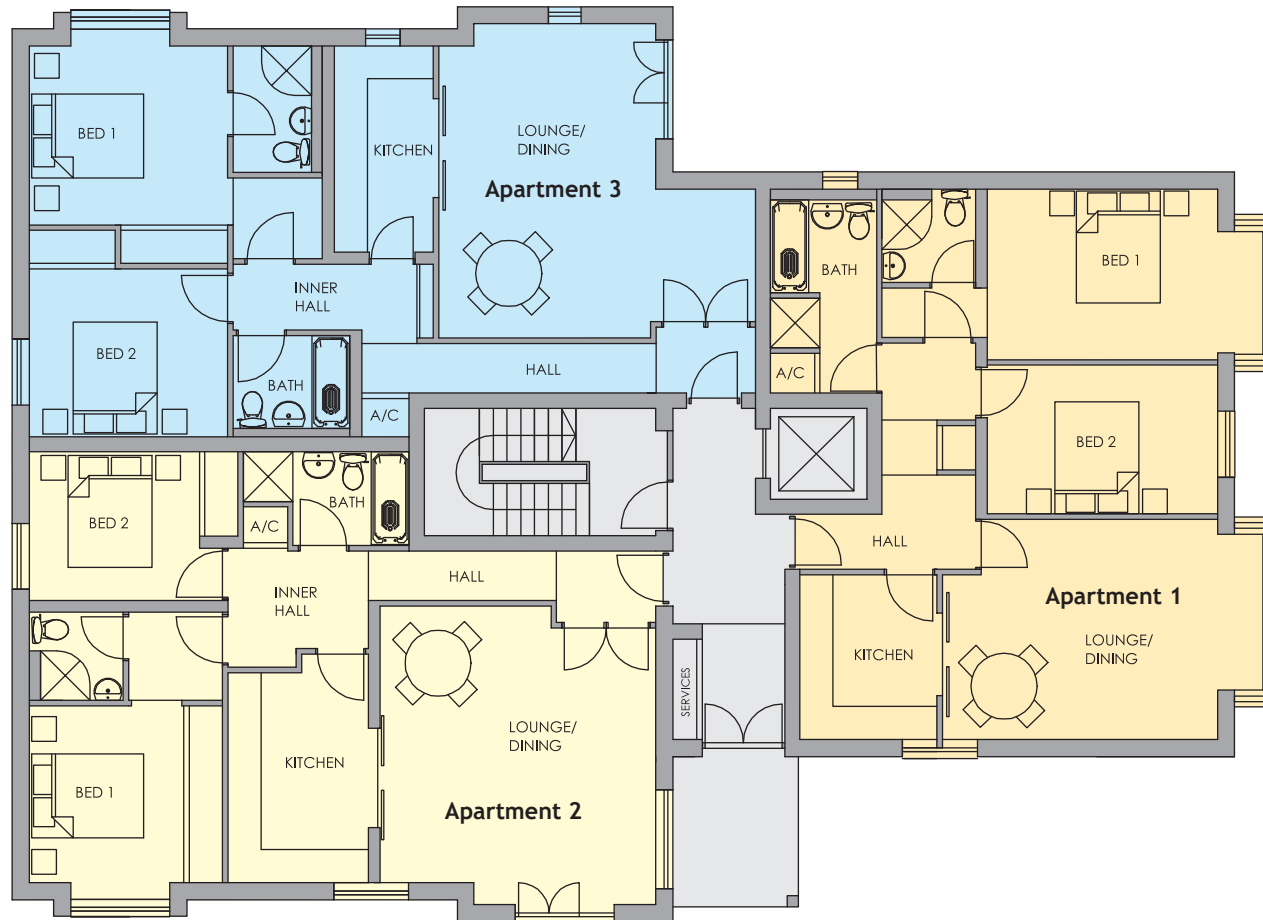


# Drakes Meadow - Ground Floor Plan



## APARTMENT 1

LOUNGE/DINING 5.8m (into bay) x 4m (19'0 into bay x 13'1)  
 KITCHEN 2.7m x 2.65m (8'10 x 8'8)  
 BEDROOM 1 4.95m (into bay) x 3.1m (16'3 into bay x 10'2)  
 EN-SUITE 1.8m x 1.4m (5'11 x 4'7)  
 BEDROOM 2 3.95m x 2.65m (13'0 x 8'8)  
 BATHROOM 3.4m x 2.0m (11'2 x 6'7)

## APARTMENT 2

LOUNGE/DINING 4.8m x 5.35m (at widest point)  
 (15'9 x 17'7 at widest point)  
 KITCHEN 2.55m x 4.15m (8'4 x 13'7)  
 BEDROOM 1 3.7m x 4.45m (at widest point)  
 (12'2 x 14'7 at widest point)  
 EN-SUITE 1.6m x 1.65m (5'3 x 5'5)  
 BEDROOM 2 3.75m x 2.9m (12'4 x 9'6)  
 BATHROOM 2.95m x 1.9m (9'8 x 6'3)

## APARTMENT 3

LOUNGE/DINING 5.75m (at widest point) x 5.75m  
 (18'10 at widest point x 18'10)  
 KITCHEN 1.8m x 3.55m (5'11 x 11'8)  
 BEDROOM 1 3.55m x 4.3m (into bay and wardrobe)  
 (11'8 x 14'1 into bay and wardrobe)  
 EN-SUITE 1.45m x 2.1m (4'9 x 6'11)  
 BEDROOM 2 3.6m x 3.8m (11'10 x 12'6)  
 BATHROOM 2.1m x 1.8m (6'11 x 5'11)

Note: The dimensions given are scaled from drawings before construction has commenced.  
 They should not be relied on for carpet sizes or items of furniture. Purchasers are strongly advised to check all measurements for themselves.